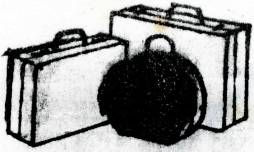


# NOTES

1156 Sterling  
Berkeley 94708

#16  
July, 1976

## HOST FAMILIES:



Host families are still needed for five boys the first ten-day period of the students' visit (Aug. 5 - 15) and one boy and two girls during the second ten-day period (Aug. 15 - 25). Families are asked to furnish room and board and local transportation to daily events.

A variety of programs have been planned by BSSE Alumni for students. During the three-week visit they will be hosted at numerous luncheons, spend 3 days in Yosemite, have tours in Berkeley, Oakland and San Francisco, go swimming and ice skating, shop, and picnic. In addition host families will have a total of 6 days to plan additional entertainment, sight-seeing or relaxation.

Group events which include the entire family are:



Thursday, August 5 - Welcome party, 4:30 p.m., home of Dr. and Mrs. Chas. Koch, 2967 Avalon. Students will arrive by bus from the Oakland airport and be greeted by host families upon their arrival at the Koch's home. Light refreshments will be served if Board members remember to bring a batch of cookies!

Friday, August 6 - Welcome banquet, 7 p.m., Berkeley City Club, \$6 each includes tax and tip. The City Club cuisine comes highly recommended by all who attended the July 3 banquet, and we look forward to another evening's entertainment by talented students. For reservations contact Eugenie Bugatto, 843-0375, or Marie Gilchrist, 526-5673.

Sunday, August 8 - Ferry to Angel Island from Berkeley is reserved for 80 people. BSSE alumni have also reserved a picnic sight. Tell Kim Koch if your family will go and how many, so they can estimate attendance. Bring a picnic lunch for your family and guest (s)....plan to cook or eat it cold.

Tuesday, August 24 - JACL Sayonara Picnic, 6 p.m., Live Oak Park. Bring picnic supplies, 1 dish to share with 6 to 8 others, and pay for your steak expertly cooked for you. Notify Eugenie or Marie if you can come for good times and good byes.



Wednesday, August 25 - Departure, 10:15 a.m., Oakland airport.

\* \* \* \* \*

ORIENTATION FOR HOST FAMILIES (old and new) is scheduled for Thursday, July 29, at 7:30 p.m., Berkeley YMCA, Milvia and Allston Way, the Palm Room. Roger Bales will announce final housing arrangements, host families will be given a schedule of events, and many people will be on hand to answer questions about language, family days, emergency situations, transportation problems, etc.

\* \* \* \* \*

SPECIAL BOARD MEETING....WEDNESDAY, JULY 28.....7:30 p.m.

Home of Marie Gilchrist, 59 Northampton, RSVP

Barbara Takahashi, 843-0823, regrets only.

No August meeting !



Dear Friends,

The manner in which members of the Association rallied around the flag to host Sakai visitors July 2-4 was truly appreciated. I believe our guests enjoyed their visit - largely due to the efforts of the Association members, JACL, and City workers who participated in the host program. Thank you all many times over.

Sincerely,

Marie Gilchrist

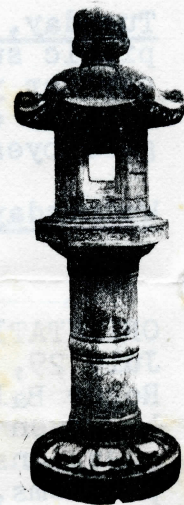
#### BICENTENNIAL FESTIVAL

Berkeley Japanese-Americans are planning a Bicentennial Festival the week of September 12 through 19 with miniature gardens, photographs, window displays of flower arrangements and Eastern influences on Western living. Jordan Hiratzka is coordinator of the week which includes displays and demonstrations at Berkeley High School Saturday, the 18th, in dancing, drums, martial arts, tea ceremonies, and flower arrangement. A banquet at Spenger's Saturday evening, the 19th, will honor Isei pioneers in the community. Frank Yamasaki and Tad Hirota will assist in the preparations, so we should be hearing more about this event in the near future.

#### THINGS JAPANESE

Tad Hirota reports that 100 Japanese students on a Bicentennial tour in the United States will arrive August 4 to present a cultural show at the University of California. Watch for further news.

Marie Gilchrist speaks enthusiastically about the beautiful Japanese garden in the center of San Mateo. Funded and developed by the San Mateo Parks and Recreation Department and the Japanese Gardeners Association, it offers an acre along El Camino Real with authentic Japanese landscape design -- a cultural treasure worth viewing.



#### ADDITIONS AND APOLOGIES

Several names were omitted from the membership, and some have been added: Mr. and Mrs. Robert Altman, Mr. and Mrs. Roger Bales, Berkeley Women's Chamber of Commerce, Mr. and Mrs. Garrett Eckbo, the Berkeley J. C.'s, Dr. and Mrs. Chas. Koch, Tom McLaren, Mrs. H. W. Mitchell, Steve Porras, Rotary Club of Berkeley, Bahidj Sabouni, and Asao Sakaki. Gus Moore, 1433 Arlington Ave., El Cerrito 94530, is Treasurer! Adult membership is \$5; family, \$10; organization, \$15, and sponsoring, \$25. Contributions are tax-deductible.

